



ForestOne®  
Specified Responsibly

# DESIGNER GROOVE™

## All-Purpose Interior Panel



For all interior applications

# WET & DRY

Made with Ultra Moisture-Resistant MDF



---

# ForestOne

ForestOne is the largest independent distributor of plywood, timber & decorative surface materials in Australia. Committed to providing responsibly sourced, premium materials for sustainable design & construction, ForestOne offers an extensive and evolving product range, with a forward-thinking mindset and ethically grounded philosophy.

ForestOne believes in a carbon net-zero future and a more sustainable built environment. Providing the best-in-class materials for Responsible Specification is the ForestOne mission.



## What does it mean to ‘Specify Responsibly’?

A sustainable building is the outcome of responsible material specification, which aligns the efficient use of resources and over-arching aims to reduce a building’s impact on the environment during its lifecycle.

If you are an architect, designer or project specifier with sustainability goals, talk to us about material choices that progress better environmental, social and more economically sustainable outcomes.

## Contents

---

DESIGNER GROOVE by ForestOne	4
Profile Guide	6
Applications	7
Features & Advantages	8
DESIGNER GROOVE VJ100	12
DESIGNER GROOVE VJ150	14
DESIGNER GROOVE Regency150	16
All Purpose	18
Finishing Options	19
DESIGNER GROOVE Installation Guide	20
General Product Information & Installation	21
Information for Use & Further Reference Material	22

---

---

# DESIGNER GROOVE All-Purpose Interior Panels by ForestOne

## **DESIGNER GROOVE – The All-Purpose Interior Panel made with Ultra Moisture-Resistant MDF**

At ForestOne we have a passion for innovation. Always seeking to provide Australian Architects & Designers with the best-in-class materials for interior design. This passion drove us to create a true all-purpose interior panel that is suitable for wet & dry applications from kitchens, to bathroom, laundries and more!

### **How is DESIGNER GROOVE different from standard interior application MDF panels?**

DESIGNER GROOVE is made from a revolutionary form of MDF which combines MDI resins. These resins are proven in lab testing to withstand expansion due to exposure to water for a prolonged period. This high degree of water resistance means that DESIGNER GROOVE can be used in any interior application, be it wet or dry, or both!

### **DESIGNER GROOVE sustainability accreditations**

ForestOne is committed to sourcing DESIGNER GROOVE from suppliers that use only the best available environmentally sustainable timber. We champion those who are putting our forests first and are dedicated to supplying eco-conscious timber and products that are innovative, high-quality and environmentally-friendly. Aligning with our responsible sourcing agenda, we also supply several FSC® (FSC-C012688) certified products under our Chain of Custody certificates – giving our customers additional ease of mind.



# Profile Guide

New All-Purpose Interior Panel available in classic V-joint & Regency profiles

### VJ100

Thickness (mm)	Length (mm)	Width (mm)	Weight (kg/sheet)	Product code
9mm	2400	1200	19.3kg	MDCD241209VJP
9mm	2700	1200	21.7kg	MDCD271209VJP
9mm	3000	1200	24.2kg	MDCD301209VJP

### VJ150

Thickness (mm)	Length (mm)	Width (mm)	Weight (kg/sheet)	Product code
9mm	2400	1200	19.3kg	MDCD241209VJP15
9mm	2700	1200	21.7kg	MDCD271209VJP15
9mm	3000	1200	24.2kg	MDCD301209VJP15

### Regency150

Thickness (mm)	Length (mm)	Width (mm)	Weight (kg/sheet)	Product code
9mm	2400	1200	19.3kg	MDCD241209REGNP
9mm	2700	1200	21.7kg	MDCD271209REGNP
9mm	3000	1200	24.2kg	MDCD301209REGNP

# Installations

DESIGNER GROOVE panels include an easy to use joining system that allows for a simple installation.

DESIGNER GROOVE panels are identified by a bright blue tongue, which is for general purpose interior as well as for wet area interior applications.

See Installation Guide on page 20/21.



General Purpose Interior



Wet Area Interior

# Applications

SUITABLE FOR USE IN	GENERAL PURPOSE & WET AREA INTERIOR
Feature walls	✓
Feature ceilings	✓
Bathrooms	✓
Kitchens	✓
Entrance / Hallways	✓
Boardroom / Media rooms	✓
Auditoriums	✓
Office fit outs	✓
Retail	✓
Shopping centres	✓
Shopping fit outs	✓
Restaurants	✓
Architectural ceilings	✓
Bars	✓
Period homes	✓
Bespoke	✓



DESIGNER GROOVE VJ150

# Features & Advantages



## AUSTRALIAN MADE QUALITY

The Ultra Moisture-Resistant MDF substrate is manufactured locally here in Australia. All processing and priming takes place on site at the same manufacturer, using a proprietary painting system, which produces an ultra smooth and even painted finish.



## NATIONAL DISTRIBUTION

ForestOne is one of Australia's largest distributors with a truly national sales & supply network, which means DESIGNER GROOVE products are available in bulk or in single sheets to any location throughout Australia.



## SIMPLE INSTALLATION

DESIGNER GROOVE's blue tongue joiner system enables simple connection of one board to the next. The joiner system allows for installation with no sign of interruption, with a straight forward connector, which anyone from DIY home improvers to experienced carpenters, plastering or joinery contractors can do.



## SIMPLE TO FINISH

DESIGNER GROOVE panels come pre-primed with a commercial grade UV primer and are ready for final painting. The DESIGNER GROOVE pre-primed finish is so smooth and even, that some users choose to leave the panels unpainted!



## A DUAL-PURPOSE POINT OF DIFFERENCE

There are many MDF pre-finished panels available today, each with a specific application. DESIGNER GROOVE is the first of such panels to offer a true dual-purpose, wet & dry solution in one panel!

From the kitchen to the bathroom and beyond, Architects and Interior Designers now have a simpler choice when it comes to specifying with DESIGNER GROOVE MDF panels; available in three popular profiles that cannot be created with plasterboard, cement sheet & lining boards.

DESIGNER GROOVE provides a new age in design flexibility! Design environments that match period styles or capture a contemporary look, DESIGNER GROOVE is an all-purpose wall lining material that enables all design possibilities!

With a range of sizes from 2.4m, 2.7m and 3.0m, DESIGNER GROOVE panels are the next generation in interior lining solutions!



## HIGH PERFORMANCE IN WET & DRY!

DESIGNER GROOVE is a decorative product made to the most exacting standards. Free of defects, imperfections, knots and grain inconsistencies, DESIGNER GROOVE is produced for a uniform finish with a consistent density, thickness, width and length. The panels are suitable for use with nails or countersunk screws and can tolerate a high load bearing.

With the blue tongue joiner system, the panels are identified as a suitable choice for wet-area application and will not become brittle in dry conditions and allow only minimal expansion in wet areas; trust DESIGNER GROOVE for all your interior applications!



## ABRASION RESISTANT & MOISTURE-RESISTANT

Made from moisture-resistant MDF, DESIGNER GROOVE panels are very strong and provide a high degree of impact resistance as compared to standard plasterboard. DESIGNER GROOVE panel products can be used in Bathrooms and Laundries as wall and ceiling panelling/lining. However certain areas require a "water resistant" material according to the Australian Standard AS 3740 & NCC (National Construction Code) Volume One, F1.7 and Volume Two, 3.8.1.

Behind a bath or vanity are areas that must have a water resistant material (eg: tile, stone, glass) to a height of no less than 150mm above the vessel (for the extent of the vessel) where the vessel is within 75mm of the wall. It is always best to consult an experienced qualified builder or building surveyor to review your particular requirements.



## SUSTAINABLY SOURCED & BUILDING CODE COMPLIANT

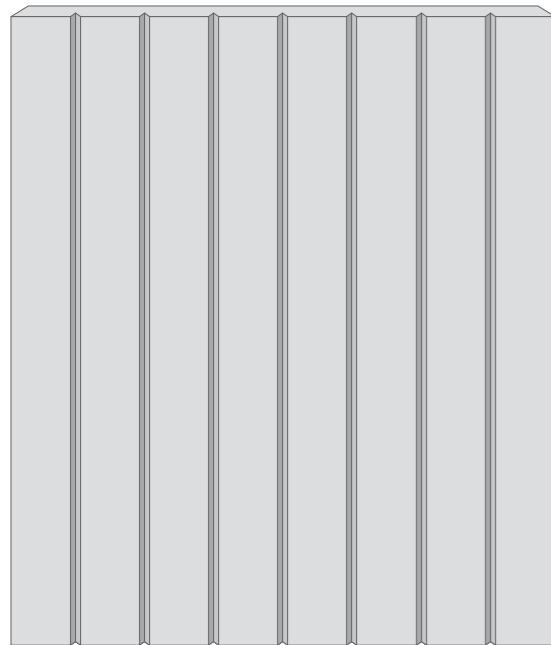
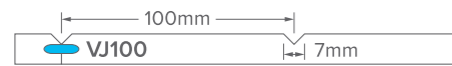
ForestOne is committed to sourcing DESIGNER GROOVE from suppliers that use only the best available environmentally sustainable timber. We champion those who are putting our forests first and are dedicated to supplying eco-conscious timber and products that are innovative, high-quality and environmentally-friendly. In addition to being responsibly sourced, DESIGNER GROOVE panels are fully compliant with national construction & building codes.



# DESIGNER GROOVE VJ100

DESIGNER GROOVE VJ100 is a classic v-groove design matching the style of traditional timber joint planks.

The v-profile creates a subtle wall and ceiling lining that enhances any space.



NOTE: Profile runs the length of the panel

## SUITABLE APPLICATIONS

- Decorative interior wall & ceiling lining
- Replacement for plasterboard
- Covering of existing wall finish
- Direct application to new frame or over existing wall
- Above Dado Rail height
- Residential applications: Dining, kitchen, lounge, family, bedroom, study, media, games
- Commercial applications: Foyers, classrooms, offices, rental properties, retail, restaurants, apartments, hotels, aged care facilities

## PRODUCT FEATURES

- Made in Australia using all Australian timber and materials
- Smooth panel surface, free of holes, splitting or splinters
- Features decorative profile to product face
- Hidden blue tongue & groove joiner system
- Superior UV coating for wet & dry areas
- High impact resistance

## VERSUS TRADITIONAL PLASTERBOARD

- No joint sealing or sanding required
- Supplied pre-primed and ready for final painting
- High resilience to abrasion
- Suitable for use in wet-area as well as dry!

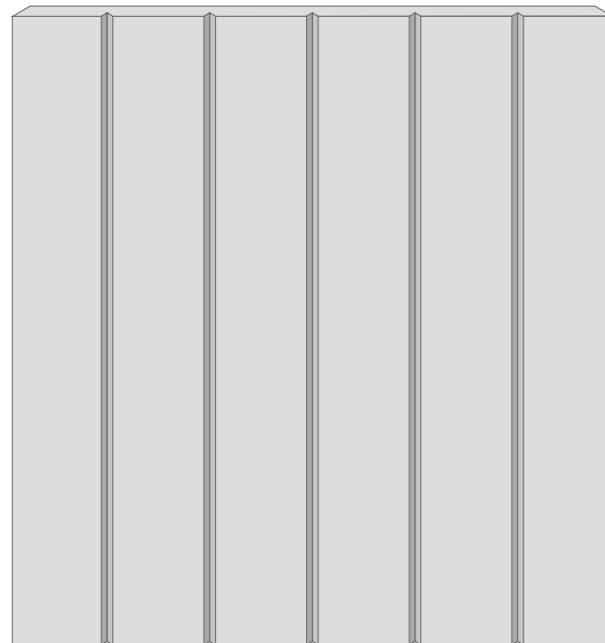
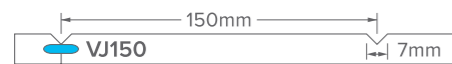
Thickness (mm)	Length (mm)	Width (mm)	Weight (kg/sheet)	Product code
9mm	2400	1200	19.3kg	MDCD241209VJP
9mm	2700	1200	21.7kg	MDCD271209VJP
9mm	3000	1200	24.2kg	MDCD301209VJP



# DESIGNER GROOVE VJ150

DESIGNER GROOVE VJ150 is a classic v-groove design matching the style of traditional timber joint planks.

The v-profile creates a subtle wall and ceiling lining that enhances any space.



NOTE: Profile runs the length of the panel

## SUITABLE APPLICATIONS

- Decorative interior wall & ceiling lining
- Replacement for plasterboard
- Covering of existing wall finish
- Direct application to new frame or over existing wall
- Above Dado Rail height
- Residential applications: Dining, kitchen, lounge, family, bedroom, study, media, games
- Commercial applications: Foyers, classrooms, offices, rental properties, retail, restaurants, apartments, hotels, aged care facilities

## PRODUCT FEATURES

- Made in Australia using all Australian timber and materials
- Smooth panel surface, free of holes, splitting or splinters
- Features decorative profile to product face
- Hidden blue tongue & groove joiner system
- Superior UV coating for wet & dry areas
- High impact resistance

## VERSUS TRADITIONAL PLASTERBOARD

- No joint sealing or sanding required
- Supplied pre-primed and ready for final painting
- High resilience to abrasion
- Suitable for use in wet-area as well as dry!

Thickness (mm)	Length (mm)	Width (mm)	Weight (kg/sheet)	Product code
9mm	2400	1200	19.3kg	MDCD241209VJP15
9mm	2700	1200	21.7kg	MDCD271209VJP15
9mm	3000	1200	24.2kg	MDCD301209VJP15



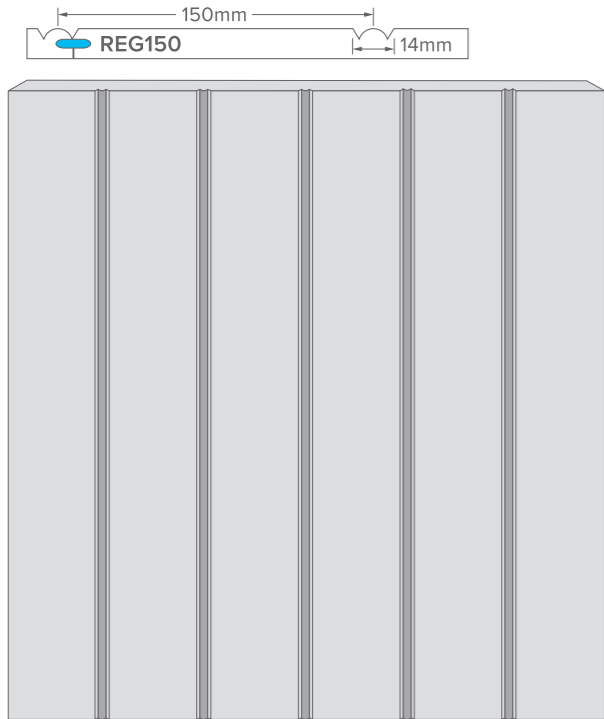


# DESIGNER GROOVE

## Regency 150

*DESIGNER GROOVE Regency150 is a period style profile, and a great choice for interior design of the same era.*

*The Regency profile creates a pastoral feel and a welcoming mood for the setting.*



NOTE: Profile runs the length of the panel

### SUITABLE APPLICATIONS

- Decorative interior wall & ceiling lining
- Replacement for plasterboard
- Covering of existing wall finish
- Direct application to new frame or over existing wall
- Above Dado Rail height
- Residential applications: Dining, kitchen, lounge, family, bedroom, study, media, games
- Commercial applications: Foyers, classrooms, offices, rental properties, retail, restaurants, apartments, hotels, aged care facilities

### PRODUCT FEATURES

- Made in Australia using all Australian timber and materials
- Smooth panel surface, free of holes, splitting or splinters
- Features decorative profile to product face
- Hidden blue tongue & groove joiner system
- Superior UV coating for wet & dry areas
- High impact resistance

### VERSUS TRADITIONAL PLASTERBOARD

- No joint sealing or sanding required
- Supplied pre-primed and ready for final painting
- High resilience to abrasion
- Suitable for use in wet-area as well as dry!

Thickness (mm)	Length (mm)	Width (mm)	Weight (kg/sheet)	Product code
9mm	2400	1200	19.3kg	MDCD241209REGNP
9mm	2700	1200	21.7kg	MDCD271209REGNP
9mm	3000	1200	24.2kg	MDCD301209REGNP



# All-Purpose: suitable for dry and wet areas

Made from a new Ultra Moisture-Resistant<sup>1</sup> MDF substrate, DESIGNER GROOVE is suitable for interior and semi-exterior wet-area applications and is available in three popular profile designs!

## WET AREA INTERIOR

Suitable for use in:

- Walls and ceilings in areas subject to high moisture and humidity
- Residential applications: Bathroom, laundry, kitchen, basement, garage, storeroom
- Commercial applications: Offices, rental properties, restaurants, apartments, hotels, aged care facilities

## PRODUCT FEATURES

- Interior – ultra moisture-resistant properties
- Compressed hardwood clad substrate
- Smooth panel surface, no holes, splitting or splinters
- Hidden blue tongue & groove joiner system
- Available in 3 popular decorative profiles

## DESIGNER GROOVE VS PLASTERBOARD

- No need to seal joints.
- No sanding required.
- Panels supplied pre-primed (face only).
- Simple installation for DIY or professional trades.
- High resilience and low ongoing maintenance required.

*Note: Wet areas are areas within a building supplied with water from a water supply system including bathrooms, laundries, and sanitary facilities. However certain areas close to or in direct contact with water such as shower enclosures require a "water resistant" and or "waterproof" material or systems according to the Australian Standard AS 3740 & NCC (National Construction Code) Volume One, F1.7 and Volume Two, 3.8.1. It is always best to consult an experienced qualified builder or building surveyor to review your requirements. DESIGNER GROOVE is not suitable for applications directly subjected to water or fully exposed external applications.*

## ULTRA MOISTURE-RESISTANT TECHNOLOGY EXPLAINED

- DESIGNER GROOVE All-Purpose is made with MDI – a revolutionary form of Ultra Moisture-Resistant MDF.
- The only MDI panel of its kind made in Australia, it incorporates a polyurethane-based Methylene Diphenyl Diisocyanate (MDI) resin.
- The use of MDI improves indoor air quality, which is key to meeting the stringent regulations controlling the manufacturing of composite wood-based products.
- MDI resin creates a super strong bond with wood particles in a chemical reaction resulting from intense heat applied in the manufacturing process.
- This process creates a non-reversible chemical weld and a superior bond compared to the mechanical weld that inferior Formaldehyde based products produce.
- Unlike traditional Urea formaldehyde resins, MDI resins do not break down gradually over time in the presence of moisture, which improves durability significantly.
- The specially formulated MDI resin used in DESIGNER GROOVE All-Purpose increases the durability of the substrate and its resistance to "thickness swell" and/or "dimensional swell".
- The result: an ultra durable & moisture-resistant all-purpose composite panel!

<sup>1</sup>Under no circumstances should DESIGNER GROOVE be installed in direct wet areas as defined by AS3740 –2010 e.g. shower recesses, splashbacks, or where the (water) vessel is within 75mm of the wall.

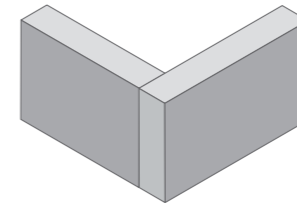
# Finishing Options

There are many ways to finish DESIGNER GROOVE panels in wall & ceiling applications, similar to plasterboard. Overviewed below are some examples of finishing options for corners and end-joins. These products are available direct from most hardware retailers.

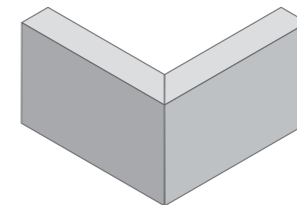
Below are examples of product commonly found in local hardware retailers, which may suit and enable more options for finishing of DESIGNER GROOVE panel projects:

## CORNERS

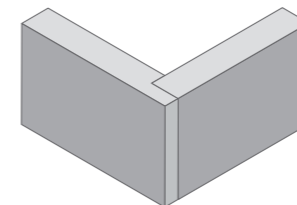
1A) Butt



1B) Mitre

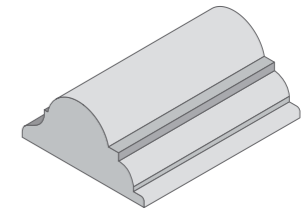


1C) Rebated

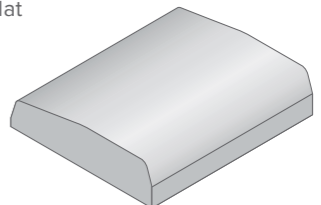


## END-JOINS

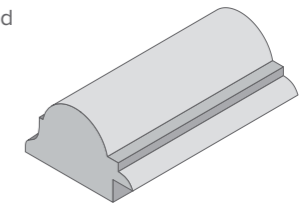
2A) Dado Flat



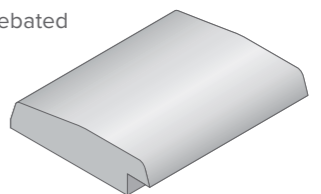
2B) Style Dado Flat



2C) Dado Rebated



2D) Style Dado Rebated



# DESIGNER GROOVE Installation Guide

## General Product Information

- Deliver product to site at least 48 hours prior to installation and allow to acclimatise to the area of application.
- Ensure framing is straight and true.
- For wall and/or ceiling applications studs should be spaced at 450mm centres or less. Framing can be placed at 600mm centres provided supported by additional noggins with a 450mm maximum spacing.
- DESIGNER GROOVE wall linings can be joined off of studs, but these joints must be supported by additional noggins with a 450mm maximum spacing.
- To prevent splintering and breakout, fixings should be positioned no closer than 25mm to a corner and no closer than 15mm to the edge.
- Leave a 10mm expansion gap at the floor if the wall lining is to be installed only part way up the wall.
- When installing from floor to ceiling, allow a 9mm to 10mm gap at the bottom and/or top of all sheets.
- Leave a 0.5mm minimum to 1mm expansion gap at each join. Do not 'Hard Knock' panels together.
- Per every metre width of wall or ceiling, allow ~1.0mm for an expansion gap at the outer perimeters of the wall or ceiling. (e.g. 6m wall x 1.0mm = 6mm therefore leave a 3mm gap at each outer edge of wall or ceiling)
- Determine how the finishing off of internal and external corners will be completed prior to installation of the first sheet.
- Where internal wall lining backs onto an external wall, it is recommended that the rear surface of the wall lining be undercoated with a paint primer. Direct fixing to brick, block work or masonry is not permitted. Battens or furring channels should be installed.
- When installed as a ceiling lining, the rear of the sheet should be undercoated prior to installation. For ceiling applications, it is recommended to avoid end butting of sheets (due to potential for movement).

Ahead of installations, it is recommended to consult with an experienced, local Registered Builder and to ensure compliance with building regulations.

## DESIGNER GROOVE Sheet and Profile Dimensions

- The presented sheet & profile dimensions are nominal sizes and may be subject to variances in manufacture. Please check all panels upon delivery and pre-plan installation based on the sizing of the product received.
- If end-joining wall and ceiling panels, please note that profiles may not align precisely; the application of a moulding over the join can minimise any variance.

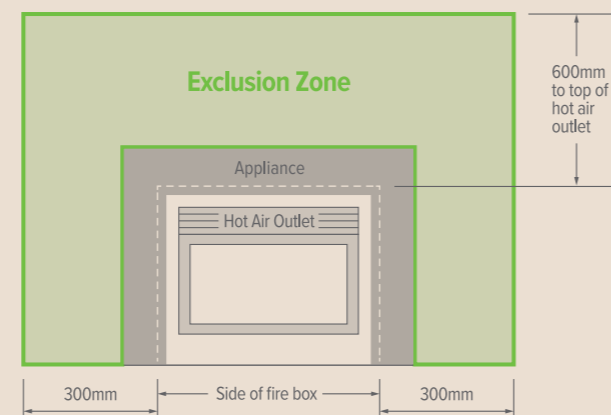
## Pre-conditioning of DESIGNER GROOVE Moisture-Resistant Panels prior to installation

- Pre-conditioning of MDF board is recommended to help ensure that product acquires equilibrium moisture content (EMC) before fixing; this pre-conditioning can reduce the likelihood of bowing, warping or size change after affixing.
- Some boards may achieve EMC by being stored for a period of time in the location of final use (without any positive conditioning). Suggested: 48-72hrs before installation.
- Do not store product in the following areas:
  - outdoors
  - open areas
  - areas with newly poured concrete
  - rooms that have been recently plastered.
- Always store the product in the area for use on gluts placed at maximum of 600 mm centres, elevated from the ground or floor and allow to acclimatise.
- Once the product has left our premises, ForestOne takes no responsibility for any potential movement of product due to variables not under our control (E.g. transport, storage, framing, installation, and paint material).

## Installation around a fireplace

To ensure safety when installing Designer Groove panels near a fireplace, please consider the following:

- Check and follow all relevant safety standards and clearance rules, as specified in ASNZS 2918.
- For traditional fireplaces, maintain a minimum distance of 500mm between the fireplace (open or closed) and the Designer Groove panels.
- If you're unable to find the required information, refer to the provided installation diagram. It outlines a typical exclusion zone for timber-based products. Remember that manufacturer recommendations may vary, so treat it as a general guideline.



# DESIGNER GROOVE Installation Guide

## Installation in wet areas

DESIGNER GROOVE panel products can be used in Bathrooms and Laundries as wall and ceiling panelling/lining. However certain areas require a "water resistant" material according to the Australian Standard: refer to AS3740 - 2010 "Waterproofing in Wet Areas within Residential Buildings", in conjunction with these instructions.

### Example 1: installing above the shower

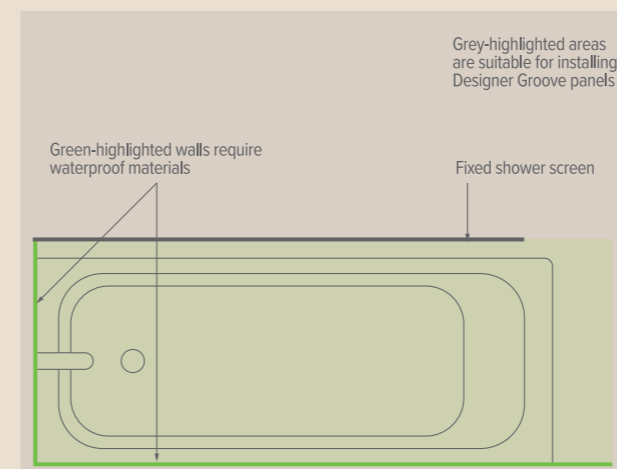
- DESIGNER GROOVE wall linings must not be installed lower than 1800mm from the finished floor level (as per NCC requirement).
- DESIGNER GROOVE must be installed no closer than 1500mm from the wall carrying the fixed shower rose, when installing above a bath, with a shower over the bath.

- When DESIGNER GROOVE is installed adjacent to an enclosed shower, the junction must be fully waterproofed and the panel must be protected (as it is not a water-proof material).

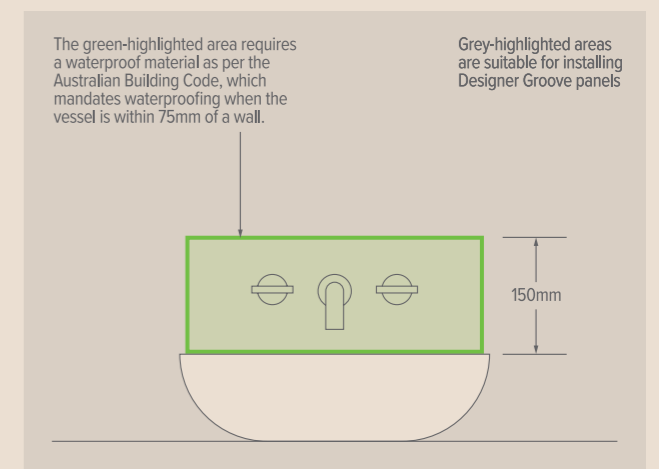
### Example 2: installing above the bath or a wash basin

- DESIGNER GROOVE wall linings must be installed at a minimum of 150mm above the vessel for the length of the vessel (as per NCC requirement).
- DESIGNER GROOVE must be installed no closer than 1500mm from the wall carrying the fixed shower rose, when installing above a bath, with a shower over the bath.

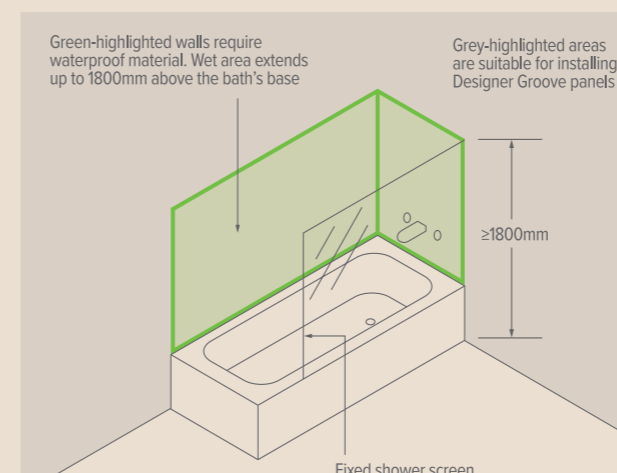
## Shower & bath with shower screen



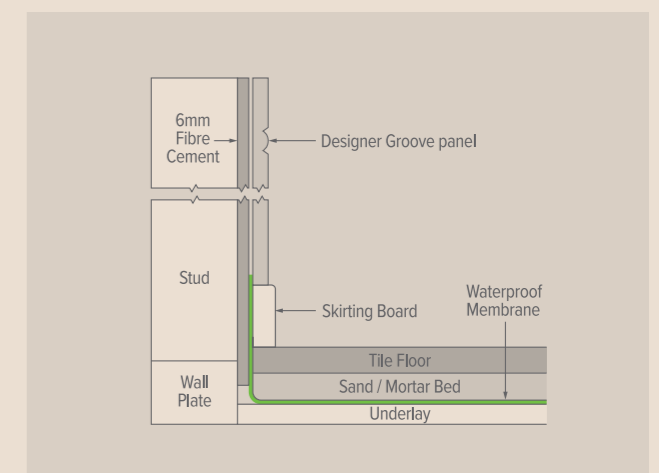
## Basin abutting wall



## Bath with fixed shower screen



## Wet area tile floor



# General Product Information & Installation

## Tools and Equipment Required

- Safety Glasses (complying with AS1337)
- P1 or P2 Dust Mask
- Tape Measure
- Hand Saw or Power Saw
- Hammer / Nail Gun or Screw Gun
- Pencil
- Spirit Level
- String Line
- Caulking Cartridge Gun or Spatula

## Cutting

DESIGNER GROOVE Wall Linings can be cut with a Power Saw or Manual Saw

- Cutting with a Power Saw, cut the board with the face-side down
- Cutting with a Manual Saw, cut the board with the face-side up

## Affixing

If fixing with power tools ensure the driving pressure is only sufficient to drive the head marginally below the surface.

- If the driving pressure is too high and the nail is driven in too far, board splitting could occur (and tool marks be shown).

## Safety

DESIGNER GROOVE products are manufactured from wood-products. As such, machine tools should be fitted with dust extractors and operators should wear appropriate personal protective wear for safety. For more safety information, refer to the respective product Material safety Data Sheets (MSDS) available on our web site.

## Wet Area Paint Finishes

- Paint Manufacturers' may not offer a warranty when applying their paint product onto another manufacturer's base primer.
- For best results, it is recommended to first trial the application of the final paint coat onto the DESIGNER GROOVE pre-primed surface, prior to installation and final painting.
- Acrylic paints are generally recommended.

## Consumables

The following is a list of products that are suggested will perform in typical product applications.

## Nails

Required length long enough to penetrate the studs (at least 30mm).

Space the nails a maximum of 500mm apart for dry areas or a maximum of 400mm for wet areas, fixing the sheet to all studs and noggins.

## Fixing wall linings

- Hammer: 2mm x 40mm anti-rust bullet head nail
- Nail Gun: Paslode ND Brads 14ga x 45mm

## Fixing ceiling linings

- Nail Gun: Paslode Duo-Fast C2.5 x 45 Ring Shank

## Screws

Space the screws a maximum of 500mm apart for dry areas or a maximum of 400mm for wet areas, fixing the sheet to all studs and noggins.

## Affixing to timber frame

ICCONS: Needle point CSK head part (No. TP796)

- 8 -15 x 20 or 30mm

ICCONS: Collated Needle point CSK head collated (IC Find # 796C or 798C)

- 8 -15 x 20 or 30mm

## Affixing to steel frame:

ICCONS: Self-Drilling CSK head Self embed head (part No. TP326)

- 8 -18 x 20 or 30mm ICCONS: Collated

• Self-Drilling CSK head Self embed head collated (IC Find # 344C or 346C)

- 8 -15 x 20 or 30mm

## Glues

A flexible construction adhesive or stud adhesive should be used for fixing the sheets to the studs and noggins.

Use a generous dollop or "acorns" of adhesive to the studs and noggins before fixing each sheet.

Apply a maximum of 500mm apart for dry areas or a maximum of 400mm for wet areas,

Over existing walls apply a 5mm bead of flexible construction adhesive in zig zag pattern over the existing lining.

Always follow the adhesive manufacturers' recommendations for how much to use.

## Misc.

- Spacers – use off cuts of the 9mm MDF or 10mm timber pieces.
- PVA adhesive for glueing corners together and mouldings in place.
- Best to use a Timber based filler to fill nail or screw holes.

# DESIGNER GROOVE™

## All-Purpose Interior Panels

### are made with MDI polyurethane resin – a revolutionary form of Ultra Moisture-Resistant MDF – ideal for use in kitchens, bathrooms, laundries & more!



Contact ForestOne  
T. 1300 088 066  
www.forest.one  
enquiries@forest.one

 **ForestOne®**  
Specified Responsibly